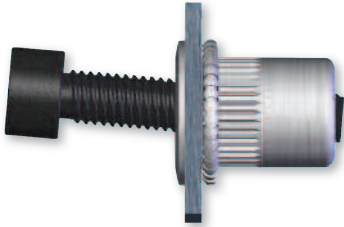
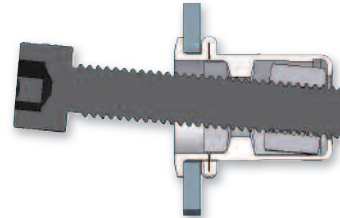


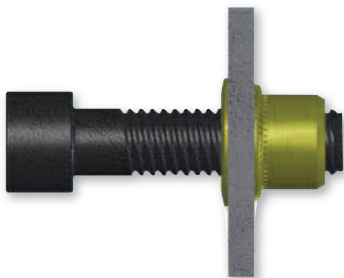
Internally floating threads allow for component attachments in off center applications



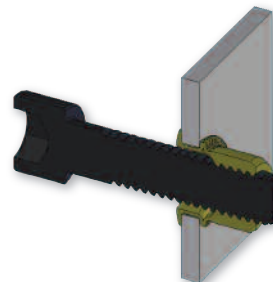
RIV-FLOAT® Installed



Cross Section of RIV-FLOAT® Installed



Standard Rivet Nut Installed



Cross Section of a Standard Rivet Nut Installed

## Features and Benefits:

- FLOATING NUT ALIGNS TO DRIVE ANGLE OF SCREW ELIMINATING CROSS THREADING AND SPIN OUT
- ALLOWS POST INSTALLATION IN APPLICATIONS WHERE WELD NUTS OR CAGE NUTS ARE TYPICALLY USED
- PATENT PENDING
- ROHS COMPLIANT
- SHEREX IS TS 16949 CERTIFIED

## Technical Data:

- .020" RADIAL FLOAT
- LARGE (RFL) AND SMALL FLANGE (RFK) SERIES AVAILABLE IN 8-32, 10-32, 1/4-20, M4, M5, AND M6 SIZES
- MECHANICALLY LOCKED RIV-FLOAT® IS AVAILABLE WITH PREVAILING TORQUE FEATURE TO IFI SPEC 100/107
- INSTALLED WITH MS 50 HYDRO-PNEUMATIC TOOL WITH RIV-FLOAT® NOSE PIECE
- ZINC ELECTROPLATE TO 8 μm WITH TRIVALENT CHROMATE - 120/240

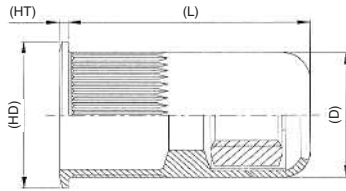


RIV-FLOAT® is installed with MS 50 Hydro-Pneumatic tool with RIV-FLOAT® Nose Piece

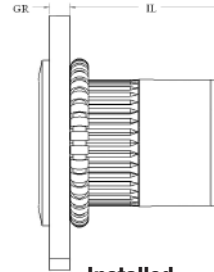


**Ensure easy, accurate, and fast attachment of components in off center applications.**

**ACCOUNTS FOR TOLERANCE STACK UP IN JOINT DESIGN AND MISALIGNMENT DURING SERVICE OF THE JOINT**



**Uninstalled**



**Installed**

**RFK SERIES - SMALL FLANGE**

SHEREX Part Number Inch - Steel	Thread Size	Radial Deflection	Grip Range		L	HD	HT	D	IL	Hole Size	Material Thickness (Steel)	Pull Out	Failure Mode (Pull Out)	Torque Out	Failure Mode (Torque Out)	Suggested Assembly Torque Grade 5 Class 8.8
			Min.	Max.												
RFK2-0832-130	8-32 UNC	0.020	0.027	.130	.7195	.455	.022	.390	.522	.391	.130"	2205 lbf	Bolt Breaks	71 in-lb	Bolt Breaks	22.0 in-lb
RFK2-1032-150	10-32 UNF	0.015	0.027	.150	.7195	.455	.022	.390	.522	.391	.150"	3530 lbf	Bolt Breaks	128 in-lb	Bolt Breaks	36.0 in-lb
RFK2-2520-150	1/4-20 UNC	0.030	0.027	.150	.8190	.595	.022	.530	.630	.531	.150"	5510 lbf	Bolt Breaks	265 in-lb	Bolt Breaks	75.0 in-lb

SHEREX Part Number Metric - Steel	Thread Size	Radial Deflection	Grip Range		L	HD	HT	D	IL	Hole Size	Material Thickness (Steel)	Pull Out	Failure Mode (Pull Out)	Torque Out	Failure Mode (Torque Out)	Suggested Assembly Torque Grade 5 Class 8.8
			Min.	Max.												
RFK2-470-3.3	M4x0.7 ISO	0.51	0.7	3.3	18.28	11.56	0.55	9.91	13.25	10.00	3.3 mm	1000 kgf	Bolt Breaks	9 N•m	Bolt Breaks	2.5 N•m
RFK2-580-3.8	M5x0.8 ISO	0.38	0.7	3.8	18.28	11.56	0.55	9.91	13.25	10.00	3.8 mm	1900 kgf	Bolt Breaks	21 N•m	Bolt Breaks	5.0 N•m
RFK2-610-3.8	M6x1.0 ISO	0.76	0.7	3.8	20.80	15.11	0.55	13.46	16.00	13.50	3.8mm	2500 kgf	Bolt Breaks	30 N•m	Bolt Breaks	8.6 N•m

**RFL SERIES - LARGE FLANGE**

SHEREX Part Number Inch - Steel	Thread Size	Radial Deflection	Grip Range		L	HD	HT	D	IL	Hole Size	Material Thickness (Steel)	Pull Out	Failure Mode (Pull Out)	Torque Out	Failure Mode (Torque Out)	Suggested Assembly Torque Grade 5 Class 8.8
			Min.	Max.												
RFL2-0832-130	8-32 UNC	0.020	.027	.130	.7195	.500	.030	.390	.522	.391	.130"	2205 lbf	Bolt Breaks	71 in-lb	Bolt Breaks	22.0 in-lb
RFL2-1032-150	10-32 UNF	0.015	.027	.150	.7195	.500	.030	.390	.522	.391	.150"	3530 lbf	Bolt Breaks	128 in-lb	Bolt Breaks	36.0 in-lb
RFL2-2520-150	1/4-20 UNC	0.030	.027	.150	.8190	.685	.035	.530	.630	.391	.150"	5510 lbf	Bolt Breaks	265 in-lb	Bolt Breaks	75.0 in-lb

SHEREX Part Number Metric - Steel	Thread Size	Radial Deflection	Grip Range		L	HD	HT	D	IL	Hole Size	Material Thickness (Steel)	Pull Out	Failure Mode (Pull Out)	Torque Out	Failure Mode (Torque Out)	Suggested Assembly Torque Grade 5 Class 8.8
			Min.	Max.												
RFL2-470-3.3	M4x0.7 ISO	0.51	0.7	3.3	18.28	12.70	0.76	9.91	13.25	10.00	3.3 mm	1000 kgf	Bolt Breaks	9 N•m	Bolt Breaks	2.5 N•m
RFL2-580-3.8	M5x0.8 ISO	0.38	0.7	3.8	18.28	12.70	0.76	9.91	13.25	10.00	3.8 mm	1900 kgf	Bolt Breaks	21 N•m	Bolt Breaks	5.0 N•m
RFL2-610-3.8	M6x1.0 ISO	0.76	0.7	3.8	20.80	17.40	0.89	13.46	16.00	13.50	3.8mm	2500 kgf	Bolt Breaks	30 N•m	Bolt Breaks	8.6 N•m

Prints, Technical Data, and 3D Models are available at [www.sherex.com](http://www.sherex.com)