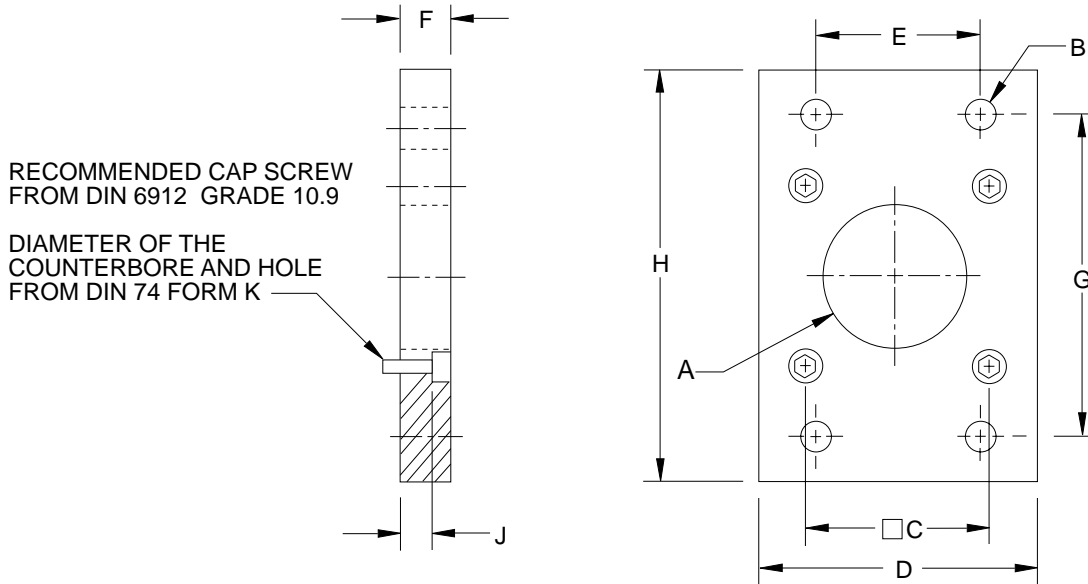


FLANGE MOUNT (FRONT)

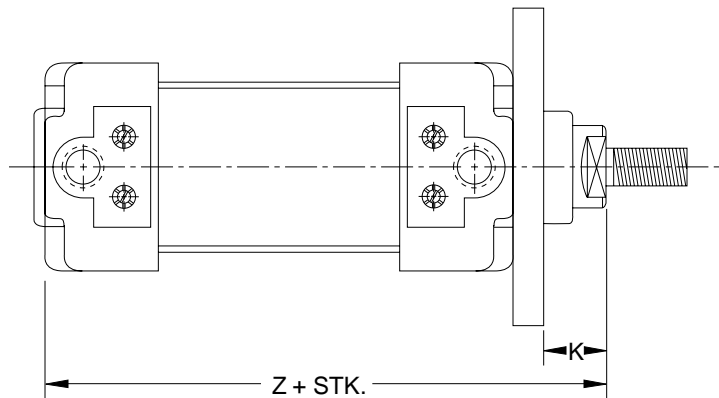
(A21 SERIES)

Stamping

04/16/96



NAAMS CODE	CYLINDER BORE Ø	A H11	B H13	C	D MAX	E JS14	F JS14	G JS14	H MAX	J -0.5	K	Z
A210032	32	30	7	32.5±0.2	50	32	10	64	86	5	16	120
A210040	40	35	9	38±0.2	58	36	10	72	96	5	20	135
A210050	50	40	9	46.5±0.2	70	45	12	90	115	6.5	25	143
A210063	63	45	9	56.5±0.2	85	50	12	100	130	6.5	25	158
A210080	80	45	12	72±0.2	105	63	16	126	165	8	30	174
A210100	100	55	14	89±0.2	130	75	16	150	187	8	35	189
A210125	125	60	16	110±0.3	157	90	20	180	224	10.5	45	225
A210160	160	65	18	140±0.3	195	115	20	230	280	9.5	60	260



NOTES & SPECIFICATIONS:

Stroke lengths: 25, 50, 80, 100, 125, 160, 200, 250, 320, 400, 500

Same flange plate to be used for front and rear mount application

FLANGE MOUNT (REAR)

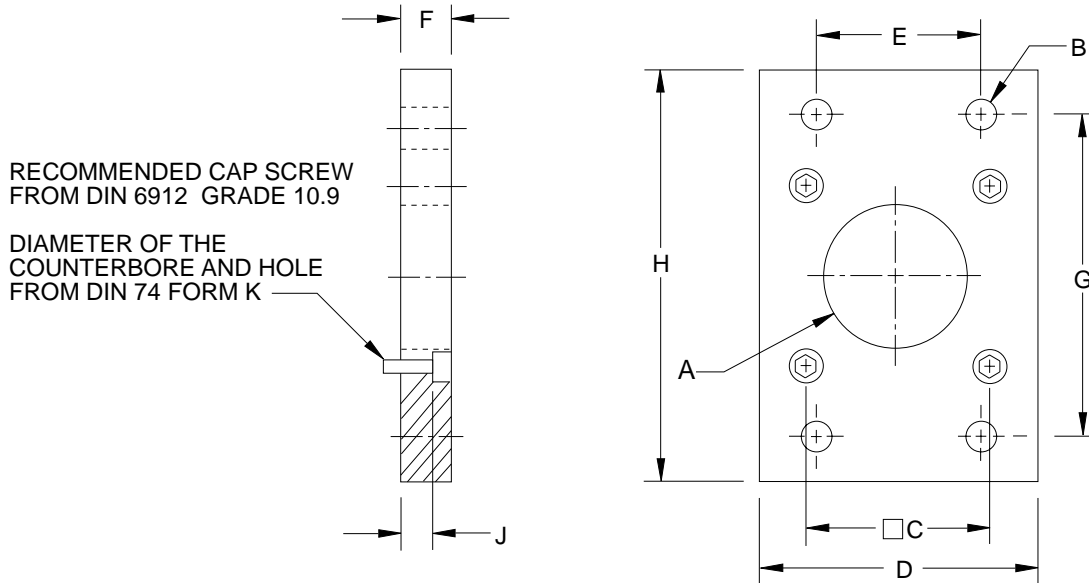
(A21 SERIES)

GLOBAL STANDARD COMPONENTS

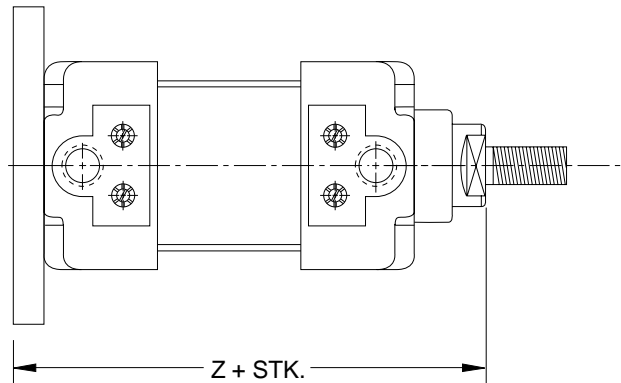


Stamping

04/16/96



NAAMS CODE	CYLINDER BORE Ø	A H11	B H13	C	D MAX	E JS14	F JS14	G JS14	H MAX	J -0.5	Z
A210032	32	30	7	32.5±0.2	50	32	10	64	86	5	130
A210040	40	35	9	38±0.2	58	36	10	72	96	5	145
A210050	50	40	9	46.5±0.2	70	45	12	90	115	6.5	155
A210063	63	45	9	56.5±0.2	85	50	12	100	130	6.5	170
A210080	80	45	12	72±0.2	105	63	16	126	165	8	190
A210100	100	55	14	89±0.2	130	75	16	150	187	8	205
A210125	125	60	16	110±0.3	157	90	20	180	224	10.5	245
A210160	160	65	18	140±0.3	195	115	20	230	280	9.5	280



NOTES & SPECIFICATIONS:

Stroke lengths: 25, 50, 80, 100, 125, 160, 200, 250, 320, 400, 500
 Same flange plate to be used for front and rear mount application