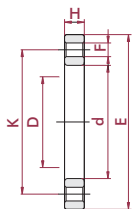


PA. 26. FLG

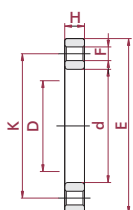
- PA flange (backing ring)
- Bride haute résistance PA
- Flangia PA
- Losflansch PA (Stützring)



D	CODE	REF.	DN	PN	d	H	E	K	F
75	07704	05 26 075	65	16	92	22	185	145	18 x 4
90	07705	05 26 090	80	16	100	24	200	160	18 x 8
110	07706	05 26 110	100	16	133	26	220	180	18 x 8
125	07707	05 26 125	110	16	149	28	230	190	18 x 8
140	07708	05 26 140	125	16	167	30	250	210	18 x 8
140 x 125	07709	05 26 141	110	16	149	30	250	210	18 x 8
160	07710	05 26 160	150	10	190	32	285	240	22 x 8
200	07711	05 26 200	175	10	227	34	315	270	22 x 8
225	07778	05 26 225	200	10	250	36	340	295	22 x 8
225 x 200	07712	05 26 226	175	10	227	36	340	295	22 x 8

PP. 12. FLG

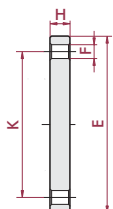
- PP flange (backing ring)
- Bride PP
- Flangia PP
- Losflansch PP (Stützring)



D	CODE	REF.	DN	PN	d	H	E	K	F
50	02045	05 12 050	40	16	62	18	150	110	18 x 4
63	02046	05 12 063	50	16	78	19	165	125	18 x 4
75	02047	05 12 075	65	16	92	20	185	145	18 x 4
90	02048	05 12 090	80	16	100	22	200	160	18 x 8
110	02049	05 12 110	100	16	133	24	220	180	18 x 8
125	02050	05 12 125	110	16	149	26	230	190	18 x 8
140	02051	05 12 140	125	16	167	28	250	210	18 x 8
140 x 125	02052	05 12 141	110	16	149	28	250	210	18 x 8
160	02053	05 12 160	150	10	190	30	285	240	22 x 8
200	02054	05 12 200	175	10	227	32	315	270	22 x 8
225	02055	05 12 225	200	10	250	34	340	295	22 x 8
225 x 200	02056	05 12 226	175	10	227	34	340	295	22 x 8

PP. 13. FLG

- PP blind flange
- Bride pleine PP
- Flangia cieca PP
- Blindflansch PP



D	CODE	REF.	DN	PN	H	E	K	F
75	02057	05 13 075	65	16	19	185	145	18 x 4
90	02058	05 13 090	80	16	20	200	160	18 x 8
110	02059	05 13 110	100	16	22	220	180	18 x 8
125	02060	05 13 125	110	16	24	230	190	18 x 8